

★ **PRESIDENTS MESSAGE BY MEL BERSCH** ★

We now have nice new seating as we acquired a great deal on chairs for the club house. I have gotten many complements on them. They look much nicer and are very comfortable. Some of the old chairs were sold at the yard sale and the rest are in storage to be used at Two Rivers during the show so we won't have to rent them.



Another new addition to the club house is the sign on the building above the doorway. "grandjunctionrockclub.org." People passing by can check out our club by going to our web site!

A lot was accomplished in our fall clean up and I wish to thank again Mike Burritt, Wayne McMacken, Linda & Rose Ann Dunham, Judy Nason, Sylvester Spaeth, Tom Ericson & John Mayerik. We cleaned out both sheds and the inside kitchen closet. We found a lot of stuff we didn't know we had. Hopefully this will make it easier to keep things organized.

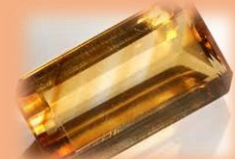
The shop upgrade is now complete. Hope you all are enjoying it. We recently acquired a new Flat Lap from Ameritool and a used unit from a member. Remember that the equipment is expensive and we need to take care of it. Please do your part in using the equipment properly and with respect. Ask the shop steward for assistance if you need it, also if you find the something is not working properly they need to know so they can get it fixed.

Your participation is encouraged in any or all club functions. The goal of the club and its Board members is not to create work but to make life more of an adventure.



## LEAVERITE NEWS

**Grand Junction Gem and Mineral Club**  
2328 Monument Road  
Grand Junction, CO 81507



November 2016			Volume 33 Number 8			
Sunday	Monday	Tuesday	Wednesday	Thursday	Friday	Saturday
		<b>1</b>	<b>2</b> 12-3 Open Shop Advanced Silversmith	<b>3</b> 9-12 Lapidary	<b>4</b>	<b>5</b> 9-12 Open Shop
<b>6</b> 	<b>7</b> 9-12 Lapidary	<b>8</b>	<b>9</b> 12-3 Open Shop Ad. Silversmith 7:00 <b>Board Meeting</b>	<b>10</b> 9-12 Lapidary <b>Cookie Night</b> <b>7:00pm</b>	<b>11</b>  Veterans Day	<b>12</b> 9-12 Open Shop
<b>13</b>	<b>14</b> 9-12 Lapidary  Full Moon	<b>15</b>	<b>16</b> 12-3 Open Shop Advanced Silversmith	<b>17</b> 9-12 Lapidary	<b>18</b>	<b>19</b> 9-12 Open Shop <b>Faceting</b> 9:30 12-3 Filigree
<b>20</b>	<b>21</b>	<b>22</b>	<b>23</b> 12-3 Open Shop Advanced Silversmith	<b>24</b> 	<b>25</b>	<b>26</b>
<b>27</b>	<b>28</b>	<b>29</b>	<b>30</b> 12-3 Open Shop Advanced Silversmith	<b>31</b>	<b>December 1</b> <b>2017</b> <b>Field Trips</b> <b>Club House</b> <b>7:00 p.m.</b>	<b>2</b> 9-12 Open Shop 12-3 Filigree

c  
l  
u  
b  
n  
e  
w  
s



### Field Trips

Saturday, November 12, 2016, meet at the clubhouse at 8:00 am to go west of Glade Park in the Sand Flat area near the Colorado River on Buckhorn Mesa. This area has produced limb casts, petrified wood, and tree ferns. It will take about two hours to get there. There will be moderate hiking, and you will need a high clearance vehicle. Bring your lunch, water, light digging tools, and a camera. Also, because of the time of year, we will need to keep an eye on the weather. Check in with Meetup, <https://www.meetup.com/Grand-Junction-Gem-and-Mineral-Club/events/> for all changes in plans or destinations. Your leader will be Jim Schultz, 242-0428. Call him with any questions.

### Let's Plan for Next Year

Please come!! This is important. Thursday, December 1, 2016 at 7:00 pm is the time to discuss and organize the field trips for the coming year. Your input is important in organizing these trips. Let's generate ideas and make plans for a variety of trips.



### Mineral Group

October 2016

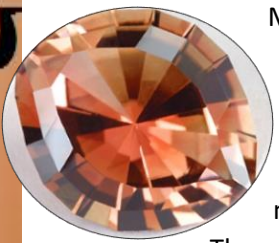
We had a nice group of people. Thanks to Marge Regel, a member from Colorado Springs, for coming all that way to show her nice micro collection of Wulfenite's from the Blanchard Mine in New Mexico. Mel gave a talk on the crystallography and the mineral crystal systems of Barites and Quartzes. We looked at several different specimens that people had brought. Thanks to Jim Shultz for taking over the microscope since Pam was sick. The next meeting won't be until January 2017 due to the Holidays in November and December. Have a great Thanksgiving and a Very Merry Christmas! Mel and Pam Bersch

### Facetors Group

September 24, 2016--Attendance: Cathy Ericson, Howard Whipple, Gary Thomas, Casey Trump, Ralph Stuart, Mike Ryan and Connie Duncan.

Schlegel Rectangle was cut by Howard - Orange/Red Laser Gem and Connie - Lead Glass. Casey had a Montana medium blue Sapphire in the Portuguese Cut and Howard had the Starshine design in green Spinel. Howard is the only member that has finished his competition stone for 2017. Other stones are in progress.

October 22, 2016--Attendance: Howard Whipple, Gary Thomas, Jim Smith and wife Eva, Thom Ericson, Dale Breckenridge, Ralph Stuart, Casey Trump and Connie Duncan. Cathy Ericson is in the hospital and Thom reported that she is very ill. It was great to see Jim doing so well after his recent knee replacement. He now will have hand surgery on the 26th of October so he isn't doing any cutting for a while.



Moonglow, was cut by: Howard- Clear CZ, Doc - Opal. Gary had last month's project cut in Synthetic Quartz. Dale commented that this design is particularly good for cutting the table first, then the crown as there are only two meet points on the crown.

Connie distributed all the items the group had ordered.

Thom, our opal expert, talked about drying opal, orienting opal and cutting opal material. Not all opal cuts the same. It varies a great deal in hardness as well as stability.

Thom will give us a program in the future demonstrating all the processes for successfully cutting an opal.

Gary mentioned the pitting problems he had with spinel. Dale said to start preforming on a 600 lap, nothing coarser, then use Nubond or Dyna Laps thru 3000 to remove the pits and said to go from 600 direct to 14,000 on a ceramic to remove the pits and then move on to polish on a ceramic.

Starting in November we will return to meetings on the third Saturday, not the fourth Saturday, thru April 2017. Our next meeting will be Nov. 19th, the project is: "Gamma Brilliant"



### November and December

The Holidays are upon us and that means we will have just one meeting in November and one in December. Take time to share the holiday spirit. At the November meeting we will not have the rock auction as we normally do but instead will have an interesting program for you. We will also be asking for volunteers to cook a turkey, a ham, or mashed potatoes for the December Christmas Dinner. Save your receipt and the club will reimburse you for the cost. Mel Bersch



### Cookie Meeting Programs

Thomas Hunn, of Thomas Hunn Jewelry, presented a slide show about his dives and the beautiful underwater world he has seen. He has taken some very beautiful and unique pictures. We want him to come back to share his knowledge of diamonds and gemstones. Thanks for a very interesting evening.

For the November program, Tony Kovschak, M.Sc., CPG. will be speaking about the fossil and uranium-rich geological deposits from 161 to 145 million years ago that surround us in this part of the USA.

Tony graduated from the University of Texas at Arlington in 1973, went to work for Union Carbide studying the uranium-vanadium deposits of the Colorado Plateau. He has also worked for Umetco Minerals, Energy Fuels Nuclear, and Denison Mines. He was manager of exploration for Union Carbide. Tony has been on foreign assignments around the world, taught at CMU here from 2003 to 2008, and was listed on the Experts Section list for Geology for the IAEA. He retired about 2 years ago.

We are very fortunate to have Tony Kovschak as November's featured speaker! Please come and listen to his presentation.

### Classes



Lapidary classes have a new format. They will consist of 6 sessions of 3 hours each to be held on Monday and Thursday mornings from 9AM – Noon beginning October 31<sup>st</sup>. There is no additional cost for materials. If you have a favorite rock you would like to cut and polish, bring it with you, and we have a large supply of materials to choose from. This will be a basic class for beginners to learn the methods used in lapidary procedures of different types, with emphasis on making cabachons for basic jewelry. You never know what is inside a rock until you cut and polish it. These are fun classes!

**Cindy Teare:** Cindy would like 2 teachers for each class so we are training new teachers all the time. This is a great opportunity for members and current teachers to suggest an apprentice.

### Yard Sale and Rock Auction

Rock Auction and Yard Sale held in October was a huge success, making almost as much as we have made at our Annual Gem, Mineral, & Jewelry Show! Thanks to all who participated. A special thanks to Jim Schultz for organizing it and Judy Nason for heading up the yard sale. This new format seems to work Great!



C  
L  
U  
B  
  
N  
E  
W  
S



### Science Club Presentation

Congratulations to Dave McCollough, Pat Mitchell, Mel and Pam Bersch,, Wayne and Aden McMacken, and Jim Barkley who presented A Walk in Time at The John McConnell Math & Science Center on October 15th in conjunction with Earth Science Week.

*Congrats*



Show and tell rocks: Mike had cabochons and blue rock spider web bone 4 mile cabochon Mexican plum stinking water plume. Other brag rocks were fossils, skeleton of a crab shell, shark poop, petrified wood and red dinosaur bone.

Hints on going to Henry Mountains: Great place to go but you need an ATV to get in to the Henry Mountains. There is a great campground at Star springs. Be sure to go early in the year to avoid the gnats



### November Gemstones

**Two gems are appropriate for November Birthdays**

#### Topaz

Topaz is a gemstone available in a rich rainbow of colors. Prized for several thousand years in antiquity, all yellow gems in antiquity were called topaz. The most prized color of topaz is called Imperial topaz after the Russian Czars of the 1800s and features a magnificent orange body color with pinkish undertones. Topaz also comes in yellow, pink, purple, orange, and the many popular blue tones.

#### Citrine

Citrine, the other birthstone for November is known as the "healing quartz". This golden gemstone is said to support vitality and health while encouraging and guiding hope, energy and warmth within the wearer. Citrine can be found in a variety of shades ranging from pastel yellow to dark brownish orange. It is one of the most affordable of gemstones and plentiful in nature. Citrine is found most frequently in Brazil, Bolivia, and Spain.

## In the News

### Civil War Cannonballs



A bomb squad is at a South Carolina beach after Hurricane Matthew apparently unearthed old Civil War cannonballs from the sand. Charleston County Sheriff's spokesman Maj. Eric Watson said in a news release that the cannonballs were found on Folly Beach on Sunday afternoon, but bomb squad members couldn't get to it immediately because of the rising tide. Once the ocean level goes down, Watson says technicians will make it safe. He warned residents might hear a small boom. The first shots of the Civil War were fired at nearby Fort Sumter in 1861. This photo provided by the Charleston County Sheriff's Office shows the Civil War-era cannonballs.

### Gem and Mineral Shows in November 2016

November 4-5, 2016: Hurricane, Utah, Southern Utah Rock and Gem Show  
contact Eric Funk, (435)-609-0136; e-mail: [eric\\_funk@yahoo.com](mailto:eric_funk@yahoo.com)

November 19-20, 2016: Mesa, Arizona Autumn Jewelry, Gem & Mineral Show  
Apache Junction Rock & Gem Club, Skyline High School, 845 South Crismon Road

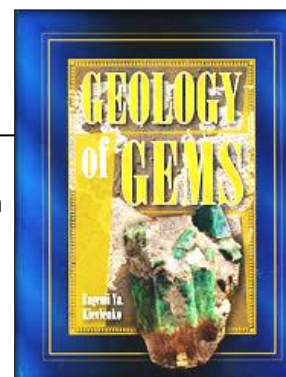
### 18 Major River Basins in the United States

- |                               |                                  |                               |
|-------------------------------|----------------------------------|-------------------------------|
| 1. Pacific Northwest Basin    | 7. Texas Gulf Coast Basin        | 13. Great Lakes Basin         |
| 2. California River Basin     | 8. Arkansas-White-Red Basin      | 14. Tennessee River Basin     |
| 3. Great Basin                | 9. Lower Mississippi River Basin | 15. Ohio River Basin          |
| 4. Lower Colorado River Basin | 10. Missouri River Basin         | 16. South Atlantic-Gulf Basin |
| 5. Upper Colorado River Basin | 11. Souris-Red-Rainy Basin       | 17. Mid-Atlantic Basin        |
| 6. Rio Grande River Basin     | 12. Upper Mississippi Basin      | 18. New England Basin         |

<http://www.dailymail.co.uk/sciencetech/article-3860062/The-veins-America-Stunning-map-shows-river-basin-US.html>



**Geology of Gems** by Eugenii Ya. Kievlenko  
Geology of Gems is the first comprehensive English language publication to place gem deposits into a concise geological and genetic framework which provides an understanding of existing deposits and the environments of their formation.



## Grand Junction Gem and Mineral Club

### Officers

President	Mel Bersch	242-3134
Vice President	Mike Burritt	260-3897
Co-Secretary	Carla Martin	523-2148
Co-Secretary	Kay Crawford	253-414-7297
Treasurer	Pam Bersch	242-3134

### Directors

Thom Ericson	623-2522
Pat Martinez	434-9270
Cindy Teare	462-6806
Jim Schultz	242-0428
Betty Jo (BJ Brown)	241-3051

### Committee Chairpersons

Audit	Kathy Erickson	623-2522
Building/Ground	Sylvester Spaeth	846-5716
	Judy Nason	250-9128
Compliance	Jim Schultz	242-0428
Correspondence	Bambi Harmon	245-1414
Decorating	Linda Dunham	620-255-2856
Display Cases	Val Meduros	773-4244
	Carmen Bruno	773-4247
Education	Cindy Teare	462-6806
Field Trips	Wayne Sims	314-2970
Funding/Constr.	Mike Cosby	589-0687
Historian	Virdie Savage	243-1030
	Connie Lynch	361-2123

Leaverite Editor

Lorrie Wallace	250-1122
JoAnn Whalen	424-2007

Librarian

Evita Schultz	242-0428
---------------	----------

Meet-Up

Jim Schultz	242-0428
-------------	----------

Membership/Badges

Dave McCollough	523-5443
-----------------	----------

Nominating

Missy Palmer	639-2615
--------------	----------

Publicity

Teri Drost	256-0983
------------	----------

Scholarships

Wayne McMacken	208-2534
----------------	----------

Shop Foreman

Bill Hood	241-8020
-----------	----------

Show

Thom Ericson	623-2522
--------------	----------

Show Assistant

Scott Pugsley	972-953-7735
---------------	--------------

Supplies

Chuck Duncan	270-8068
--------------	----------

Vests

Wayne McMacken	208-2534
----------------	----------

Website

Linda Sims	314-2970
------------	----------

Linda Sims	314-2970
------------	----------

John Mayerik	243-8589
--------------	----------

### Duties of General Membership

- Pot Luck: Bring a dish to share with several members
- Cookie Meeting: Bring 3 dozen cookies for meeting
- Cleaning: Clean before each Pot Luck Meeting
- Hospitality: Be early, greet and give out prize tickets.
- Show: Set up, take down and work during.

### Sign Up for A Duty



**Safety**-All members  
at all times.

### Board Meeting

The board will meet at Mel Bersch's house, 248 Little Park Road, at 7:00 pm on the Wednesday before the 2<sup>nd</sup> Thursday Cookie Meeting each month. All club members are welcome to attend. Hope to see you there.

### Club Information

The Grand Junction Gem & Mineral Club, Inc. is affiliated with the American Federation of Mineralogical Societies, and the Rocky Mountain Federation of Mineralogical Societies. The club is located at 2328 Monument Road Grand Junction, CO. The Club is a nonprofit, 501(c)(3) tax-exempt, educational organization. Our purpose shall be exclusively educational and social: To increase and disseminate knowledge of the earth sciences pertaining to minerals, gems, rocks, artifacts, fossils and similar subjects; To promote and perpetuate knowledge of the lapidary arts; To encourage field trips; To encourage greater public interest and education in gems, fossils and minerals, cooperating with established institutions in such matters. The Grand Junction Gem and Mineral Club meets on the second and fourth Thursday of each month at 6:30 pm in our club building. June, July, and August meetings will be on the fourth Thursday only. November and December meetings will be on the second Thursday only. Our Annual Show is Mother's Day Weekend and is held at Two Rivers Convention Center at 159 Main St, Grand Junction, CO 81501. Classes and workshops are offered throughout the year and are announced in the newsletter.

### The Mineral Group

The Mineral Group meets at the Bersch's, 248 Little Park Rd, on the Friday after the 4<sup>th</sup> Thursday's Club Meeting and is open to all club members and guests. A potluck will be followed by discussion and microscopic images of various minerals. Please bring up to 5 specimens, and/or other minerals you wish to look at for the discussion.

## New Members

Welcome to the Grand Junction Gem and Mineral Club. Include your email address when you register to receive newsletters and updates. Check out the website for past newsletters and general information. Order a vest made to your size from Connie Lynch for \$20.00 and a name Tag from Dave McCullough for \$8.00. Be sure to sign up for some classes to learn how to use the machines in our shop so you can participate in open shop.

## Dues

Our calendar year is January 1 - December 31. Dues are due by December 31 but must be in by January 30 for names to be included in the Club Directory. Please pay your dues at the meeting or send to: Dave McCollough 3032 Milburn Court Grand Junction, CO 81504; 970-523-5443. Prospective members should attend one general meeting to obtain a membership application. Annual dues will be prorated after July 1st. Adult Member - \$30.00 (18 and over 2nd Adult, same household - \$10.00 Children under 18 years, same household - No Cost

## Club Rules and Regulations

The notebook of rules and regulations is available on the front table at all meetings for members to read.

## Gem and Mineral Classes

Most classes are 6 weeks. Member's cost \$30.00. Non-member's cost is \$60.00. The cost of the classes is based on 6 weeks and prorated when the class is shorter. Please contact instructors to sign up for classes.

Class	Instructor	Phone	Open Shop
Beading	Tiny Blasdal	858-7975	<b>Shop Chairman:</b> Thom Erickson 623-2522
Chain Making	Cindy Teare	462-6806	<b>Shop Supervisors:</b>
Faceting	Connie Duncan	244-2984	Wednesday: 12-3 Thom Erickson 623-2522
Filigree	Jana Burritt	260-9471	Saturday: 9-12 Scott Pugsley 972-953-7735
Intarsia	Jim Lynch	361-2123	Previous instruction in use of equipment is required
Lapidary	Jim Schultz	242-0428	before using any tools or machines in the shop.
Lapidary	Mike Burritt	260-3897	Sign in each time you use the shop.
Silversmith	JoAnn Piburn	245-1669	Help with the clean-up before leaving.
Silversmith	Wayne McMacken	208-2534	Shop fee is \$5.00/session.
Wire Weaving	JoAnn Piburn	245-1669	Slab saw \$.26 per square inch.
Wire Wrap	Teri Drost	256-0983	<b>Always—Safety First</b>

## The Leaverite News

The Leaverite News is your newsletter. Articles, ideas and news should come from the club members. If you are an officer, director, or committee chair person you should plan to submit monthly updates by the 15th of each month. News should be emailed to [leaveritenews@gmail.com](mailto:leaveritenews@gmail.com) or contact Lorrie Wallace (250-1122 or JoAnn Whalen (424-2007, 554 Casa Rio Ct., Grand Junction, CO, 81507. *Leaverite News is published nine months of the year (Sept-May by the Grand Junction Gem and Mineral Club, Inc. Articles printed in this newsletter are the experiences and/or opinions of the individuals submitting them. They do not necessarily reflect the views or opinions of the Grand Junction Gem and Mineral Club, nor of the editors. Articles written without a byline are written by the editor. We are not responsible for authenticity, safety, or reliability of publications. All articles/photos are included in accordance to fair use for research and education. Caution and safety should always be practiced when trying out any new idea, venture or exploration in the field. We request corrections and/or additions to articles.*

## Grand Junction Gem and Mineral Website

Our website, [www.grandjunctionrockclub.org](http://www.grandjunctionrockclub.org), has meeting information, Leaverite Newsletter, Classes, Field Trips, & Photo Gallery. Send information to John Mayerik; 243-8589; email [Grandjunctionrockclub@gmail.com](mailto:Grandjunctionrockclub@gmail.com)

## Meetup

Meetups are neighbors getting together to learn something, do something, share something. The Club is registered at the Grand Junction Meetup. Go to [http://www.meetup.com/cities/us/co/grand\\_junction/](http://www.meetup.com/cities/us/co/grand_junction/) to register or for information or call Jim Schultz at 242-0428.



## Summary of Minutes of the Gem and Mineral Club Board Meetings

### Board Meeting October 12, 2016

**Old Business:**

1. Math & Science Center rock information sessions. Open to the public as part of the earth science week on Saturday October 15th at the John McConnell Math and Science titled "A Walk-Through Time Stories of Earth"
2. Meeting room and shop safety lights installed. Two front motion sensor lights replaced.
3. Jim Schultz: Auction and yard sale did well. Next year to place an ad quarterly for donations.
4. Chairs: Purchased 100 padded at \$15/ea. Sold some of the old hard chairs. Motion to buy 10 more chairs was approved.
5. No in house auction in November.

**New Business:**

1. Scholarships: \$500 of Earl McFry scholarship transfer to new building fund account.
2. Possible funds from the Lions Club for the construction of building addition or a sound system for the current building. Request by October 31. Pam will be working on this.
3. Pam: Put ads in our newsletter or charge more membership dues for members we mail to offset the cost. Chose public advertising. Mike will oversee advertisement clients.
4. Business Cards for the club members ordered to invited potential members with information.
5. Jim Schultz: The design and financing for the club sign on the front of building. It will read "grandjunctionrockclub.org" Vote was taken and approved motion.
6. Fall cleanup day? Wednesday 19th 9:00
7. We need to buy one flat lap for the shop because what we have is inadequate. Will cost \$461.30. Voted and approves.
8. See if we can get a professor from CMU to talk to the club about West Salt Creek Landslide.
9. Lapidary Monday and Thursday 9-12

**New Business:**

1. Request to Lion's Club for building grant was sent.
2. Our Christmas Dinner is coming up so our next meeting we will have food sign ups.
3. Mineral night at Bersch's house Friday the 28th bring a dish for Pot Luck at 6:30
4. November 10 cookie night Tony Kovschak will speak about the Morrison Formation
5. The last field trip members did not find a lot of barite.

### Cookie Meeting October 13, 2016

Mike introduced the program presented by Tom Hunn.

**Old Business:**

1. How do you like the new meeting room chairs?
2. Report of yard sale and rock auction by Jim Schultz. There will be NO rock auction in November.
3. Building and maintenance. Sylvester two outside motion sensor lights have been replaced. Swamp cooler are ready for winter. We will have a yard clean up and some painting day Wednesday 19th at 9:00 a.m.
4. Field trips and field trip reports. Mike had a Saturday field trip. Meet at club house, bring screw driver. Barite is very sensitive. Bring wrapping material for specimens.

**New Business:**

1. The sign for the front of the club house has been approved by the board and ordered. It will read "grandjunctionrockclub.org."
2. Field trip planning December 1: 7:00 p.m.
3. We are getting business cards.
4. Thomas Hunn volunteered to do the diamond show another day

### Pot Luck Meeting October 27, 2016

Correspondence and illness update: Tom's wife Cathy Ericson had surgery and is improving. Roseann Dun has been in hospital she also was doing well

**Old Business:**

1. We purchased 26 more chairs at a cost of \$11.00/each.
2. Our new building sign is up.
3. We have business card for members.
4. Building and maintenance: Cleanup day a lot was accomplished both sheds cleaned out. A BIG Thanks to Mike Burritt, Wayne McMacken, Linda & Rose Ann Dunham. Judy Nason, Sylvester Spaeth, Tom Ericson, John Mayerik & Mel & Pam Bersch.



## Geology of Gems by Eugenii Ya. Kievlenko

Eugenii Kievlenko (1923-2000) was a prominent Russian geologist with extensive experience in the exploration, discovery, and evaluation of mineral deposits of all kinds. He discovered dozens of gemstone deposits in various parts of Russia and has been credited with reviving the gemstone-cutting industry of the country.

Geology of Gems is the first comprehensive English language publication to place gem deposits into a concise geological and genetic framework which provides an understanding of existing deposits and the environments of their formation. The book is international in scope and covers most major gem deposits, although there is a strong emphasis on former USSR and Russian Federation deposits.

Eighteen chapters are devoted to specific gems (precious corundum, beryl, etc.). Each chapter contains historical and mineralogical data, with discussions regarding chromophores responsible for various varieties. Major gem deposits and districts are described for each country relative to a geological-genetic classification. The text is liberally illustrated with geological and geographic maps, sections (with scales) and other figures, as well as with numerous excellent color photographs.

Very few books have been written about the geology of gem deposits. Any person who wants to be a “gem hunter” will benefit from reading this book. It contains information that is found nowhere else. This English edition is an easy-to-read and geologically accurate translation.

The table of contents gives a great outline of the classification of gems and minerals:

Table of Contents	
<b>1. General Data on Gems</b>	
1.1 Classification of Gems	
1.2 Jewels	
1.3 Jewelry-Industrial and Industrial Stones	
1.4 Synthetic Crystals - Substitutes of Natural Gems	
<b>2. Corundum (Ruby and Sapphire)</b>	
2.1 General	
2.2 Geological Genetic Types of Deposits	
2.2.1 Magmatic Deposits	
Basalt and Alkaline Basalt Extrusions	
Alkaline Basic Lamprophyres	
2.2.2 Pegmatite Deposits (Syenite Pegmatites)	
2.2.3 Contact Metasomatic Deposits	
Endoskarns in Marbles and Calciphyres	
Micaceous Anorthosites in Mafic and Ultramafic Rocks	
2.2.4 Metamorphic Deposits	
	2.2.5 Placer Deposits
	<b>3. Beryl</b>
	3.1 General
	3.2 Emerald
	3.2.1 General
	3.2.2 Geological Genetic Types of Deposits
	3.2.2.1 Pegmatite Deposits
	3.2.2.2 Greisen Deposits
	Ultramafic Greisens
	Carbonate-Black Shale Greisens
	3.2.2.3 Hydrothermal Deposits
	3.2.2.4 Placer Deposits
	3.3 Aquamarine and Other Jewelry Beryls
	3.3.1 General
	3.3.2 Geological Genetic Types of Deposits
	3.3.2.1 Pegmatite Deposits
	Miarolitic Granite Pegmatites
	Microcline-Beryl-Muscovite Vugless Pegmatites

3.3.2.2 Greisen Deposits
3.3.2.3 Post-Volcanic Exhalative-Hydrothermal Deposits
3.3.2.4 Placer Deposits
<b>4. Precious Opal</b>
4.1 General
4.2 Geological Genetic Types of Deposits
4.2.1 Hydrothermal Post-Volcanic Deposits
4.2.2 Supergene Deposits
<b>5. Topaz</b>
5.1 General
5.2 Geological Genetic Types of Deposits
5.2.1 Pegmatite Deposits
5.2.2 Greisen Deposits
5.2.3 Hydrothermal Deposits
Post-Intrusive Plutonogenic Deposits
Post-Volcanic Exhalation Hydrothermal Deposits
5.2.4 Placer Deposits
<b>6. Tourmaline</b>
6.1 General
6.2 Geological Genetic Types of Deposits
6.2.1 Pegmatite Deposits
6.2.2 Contact Metasomatic Deposits
6.2.3 Metamorphic Deposits
6.2.4 Placer Deposits
<b>7. Spinel</b>
7.1 General
7.2 Geological Genetic Types of Deposits
7.2.1 Magnesians Skarn Deposits
7.2.2 Placer Deposits
<b>8. Garnet</b>
8.1 General
8.2 Geological Genetic Types of Deposits
8.2.1 Magmatic Deposits
Kimberlites
Basaltic Eruptive Breccias
Felsic and Intermediate Extrusive Rocks

8.2.2 Pegmatite Deposits
8.2.3 Contact Metasomatic Deposits
Exo- and Endoskarns
Apogabbro Metasomatites
8.2.4 Hydrothermal Deposits
Plutonic Deposits in Ultramafic Rocks
Post-Volcanic Deposits in Felsic Extrusions
8.2.5 Metamorphic Deposits
8.2.6 Placer Deposits
<b>9. Peridot (Chrysolite)</b>
9.1 General
9.2 Geological Genetic Types of Deposits
9.2.1 Magmatic Deposits
Kimberlites
Basalts and Alkaline Basaltoids
9.2.2 Hydrothermal Deposits
Ultramafic Alkaline Massifs of the Central Type
Ultramafic Massifs of the Alpine Type
9.2.3 Placer Deposits
<b>10. Amethyst</b>
10.1 General
10.2 Geological Genetic Types of Deposits
10.2.1 Pegmatite Deposits
10.2.2 Iron-Ore Skarn Deposits
10.2.3 Hydrothermal Deposits
Plutonogenic Deposits
Volcanogenic Deposits
Telethermal Deposits
10.2.4 Placer Deposits
<b>11. Turquoise</b>
11.1 General
11.2 Geological Genetic Types of Deposits
11.2.1 Deposits in Magmatic Rocks
11.2.2 Deposits in Sandy-Shale Rocks
<b>12. Amber</b>
12.1 General
12.2 Geological Genetic Types of Deposits

12.2.1 Biogenic-Sedimentary Deposits
12.2.2 Placer Deposits
<b>13. Lazurite</b>
13.1 General
13.2 Geological Genetic Types of Deposits
13.2.1 Deposits in Magnesian Skarns
13.2.2 Placer Deposits
<b>14. Jadeite</b>
14.1 General
14.2 Geological Genetic Types of Deposits
14.2.1 Contact Metasomatic Deposits in Ultramafic Rocks
14.2.2 Placer Deposits
<b>15. Nephrite</b>
15.1 General
15.2 Geological Genetic Types of Deposits
15.2.1 Contact Metasomatic Deposits
Deposits in Serpentinized Ultramafic Rocks
Deposits in Magnesian Skarns
15.2.2 Placer Deposits
<b>16. Charoite</b>
16.1 General
16.2 Geology and Genesis of the Sirenevy Kamen Deposit
<b>17. Malachite</b>
17.1 General
17.2 Geological Genetic Types of Deposits
17.2.1 Deposits in Oxidized Zones of Copper Sulfide Ores in Carbonate-bearing Rocks
17.2.2 Placer Deposits
<b>18. Chalcedony</b>
18.1 General
18.1.1 Agate
18.1.2 Carneol, Carnelian, and Sard
18.1.3 Chrysoprase
18.1.4 Other Decorative Varieties
18.2 Geological Genetic Types of Deposits
18.2.1 Post-Volcanic Hydrothermal Deposits

Chalcedony deposits in basic and intermediate volcanogenic rocks
Agate deposits in silicic volcanogenic rocks
18.2.2 Diagenetic and Catagenic Deposits
18.2.3 Deposits in Weathered Crusts
Chrysoprase deposits in nickel-bearing weathered crusts on ultramafic rocks
Cacholong deposits in weathered crusts
18.2.4 Placer Deposits
Eluvial and eluvial-deluvial placer deposits
Agate-bearing conglomerates
Alluvial placer deposits
Shoreline placer deposits
<b>19. Rhodonite</b>
19.1 General
19.2 Geological Genetic Types of Deposits
19.2.1 Deposits in Calcic Skarns
19.2.2 Hydrothermal Deposits
19.2.3 Metamorphic Deposits
19.2.4 Placer Deposits
<b>20. Economic-Geological Types of Gemstone Deposits and the Principal Regularities in their Spatial Distribution</b>
Magmatic deposits
Pegmatites
Gemstone deposits in ultramafic rocks
Magnesian skarns
Hydrothermal deposits
Metamorphogenic deposits
Weathered crusts
Placer deposits
<b>Abbreviations</b>
<b>Reference</b>

## 18 Major River Basins in the United States

Created by Imgur user Fejetlenfej, a geographer and GIS analyst with a 'lifelong passion for beautiful maps,' it highlights the massive expanse of river basins across the country – in particular, those which feed the Mississippi River. The map visualizes Strahler Stream Order Classification, the creator explains, with higher stream orders indicated as thicker lines.

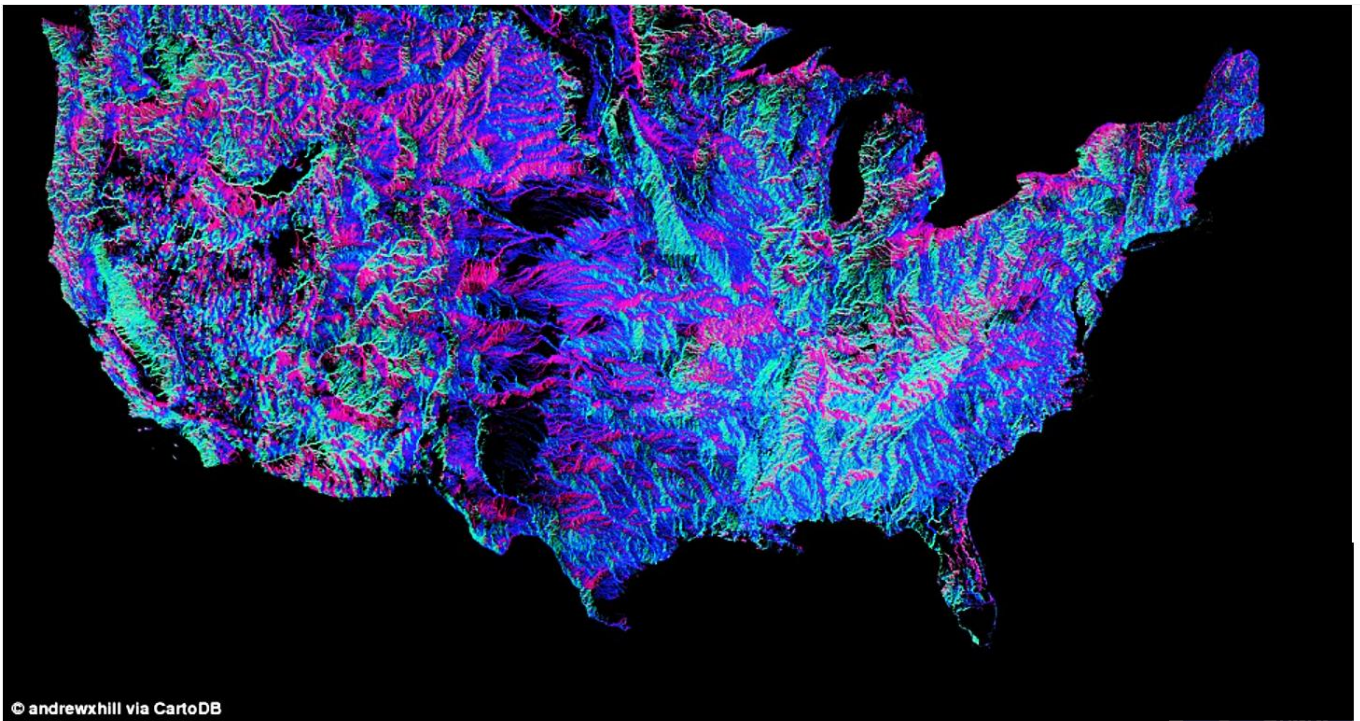


In 2014, a similar project visualized all 250,000 rivers running through America in stunning colours. Not only that, it also reveals which direction they run in.

Researchers created the incredible maps from data created by the US Geological Survey. It was created by Brooklyn designer Andrew Hill of data-visualisation firm Vizzuality. He used theCartoDB platform and the National Hydrography Dataset, which is made available online by the US Geological Survey, to create the map. 'There are 18 distinct colours around the compass,' says Hill, who also works for CartoDB

Read more: <http://www.dailymail.co.uk/sciencetech/article-3860062/The-veins-America-Stunning-map-shows-river-basin-US.html#ixzz4Nut9B2i5>





© andrewxhill via CartoDB

**Brag Rocks**

